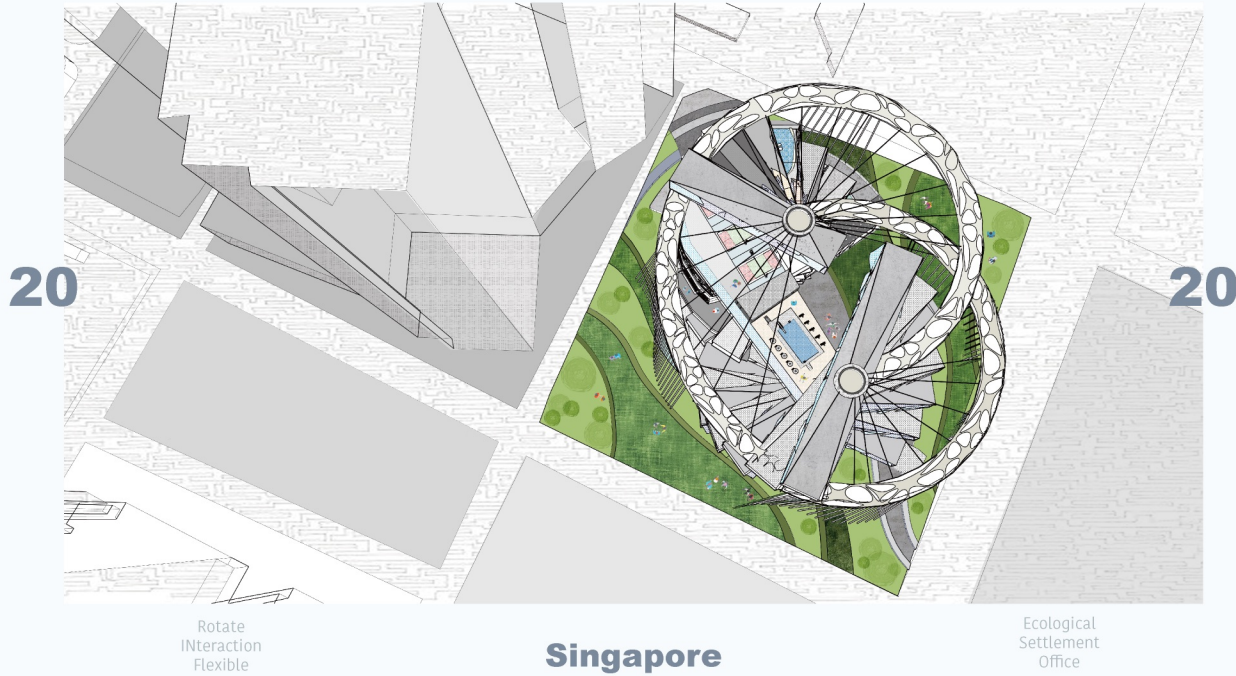


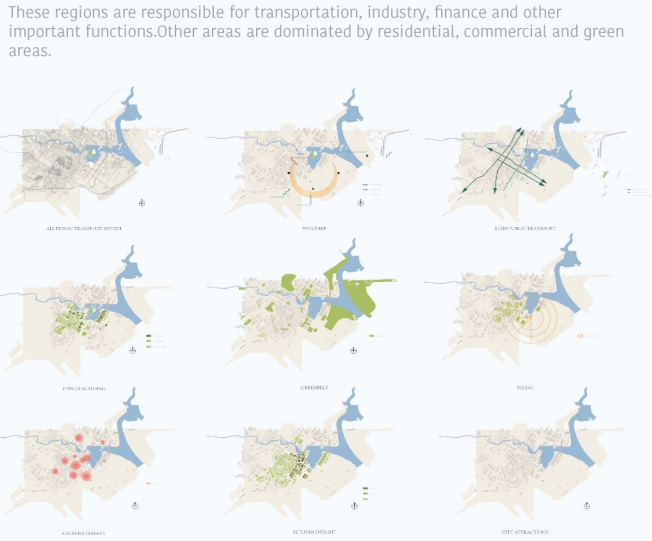
ROTATING BULIDING



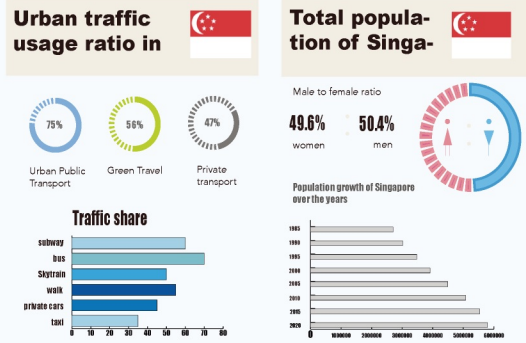
Location



As a famous garden city, Singapore's planning not only absorbs the ideas of centralism, high efficiency and high density, but also absorbs the thought essence of Howard's garden city, which organically combines the natural ecology with the modern urban building environment.region. The transportation gateway of Singapore is mainly divided into four portals, including the northern gateway, the eastern gateway, the western gateway and the central.



City date



Singapore has a population of 4.02 million permanent residents and 1.68 million non-resident residents, bringing its total population to 5.7 million, according to Singapore's 2019 Population Briefing. The large increase in the number of non-residents in Singapore in recent years was mainly due to the continued growth of the service sector and the improved outlook for the residential sector, which increased the total number of holders of work permits and contributed to the increase in the non-resident population. Meanwhile, the aging population continues to grow, with the proportion of Singaporeans aged 65 and over rising to 14.4% in 2019. From the perspective of ethnic composition, Chinese account for 74.4%, followed by Malays 13.4% and Indians 9%.

In terms of transport, Singapore's rail network has connected and strengthened urban development throughout Singapore and will continue to be a pillar of public transport. With the opening of new rail lines and stations, more people will enjoy rail commuting, with eight out of every 10 families living within a 10-minute walk of the station.

Idea

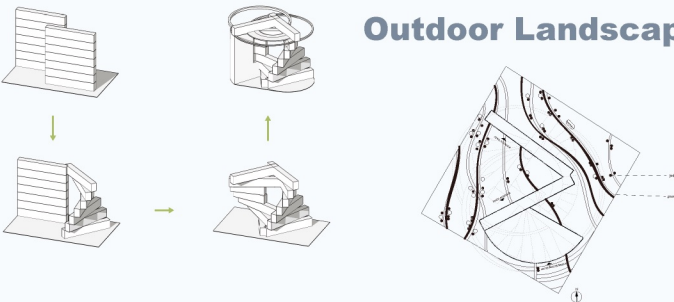
Site Atea



Urban Singapore has always been a financial and commercial center, and in order to attract talents, the city strives to be an attractive place to meet people's various needs. To develop a more versatile and creative way of life, making it not only an attractive place to work, but also a vibrant place to live and play. We think the design address is located near the CBD of Singapore.

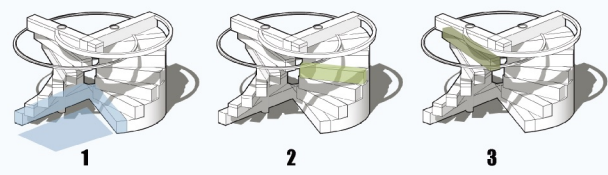
In terms of audio-visual, that high-rise buildings have a certain impact on light and vision and the concept of rotating floors is to solve such problems; at the same time.

Outdoor Landscape



Design1

Function

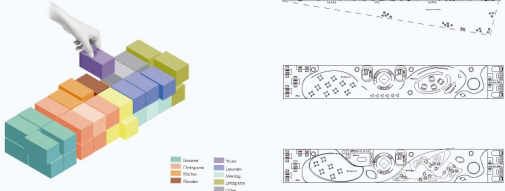


- 1.The angle of the rotating building makes an open space.
- 2.The unmoveable part link with a half-open indoor zoo/exhibition/amusement park.
- 3.The another hand, except the top floor and first floor that the other floors(in all 5 floors) are movable.

In the landscape design within the land boundary, we continue to design and rebuild the rotating/curved/inter-active elements, integrate different elements to echo the landscape and the underlying functions, and at the same time play a guiding role in the main square for the crowd.

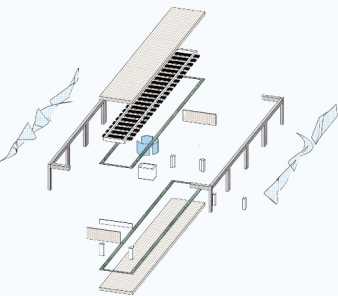
Design2

Indoor space



According to the needs of the floor, we divide a block into two floors. We hope that the single block can meet the basic living needs of users such as daily office. Due to the limitation of the block space, we distribute some functions to different floors. Between, through elevators, external folding small stairs, the connection and transformation of different functions such as life and work.

Exploded view



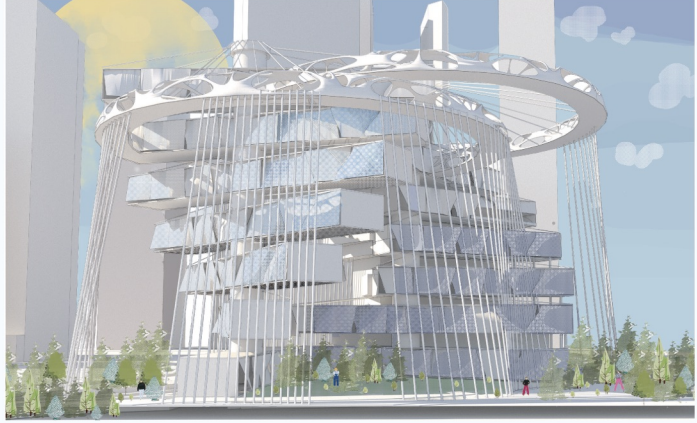
The space structure of the building uses a lightweight fiber carbon skeleton to reduce the quality and ensure that the building blocks can be fixed by ropes while being convenient to rotate; the blue part in the middle is the elevator use space and safe escape passage of the building, and the outer glass adopts a curved design to increase Light refracts into the room to provide supplemental lighting.

View

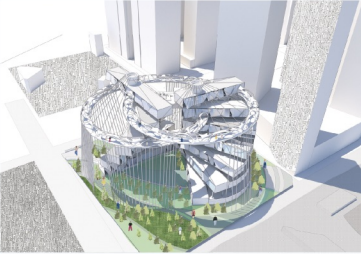


The main entrance is placed in a convenient place, and on the other hand, it provides a good sight for sightseeing and browsing. The sky trail provides library-style immersive reading.

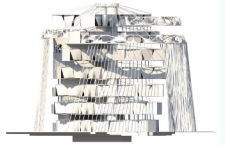
Building renderings



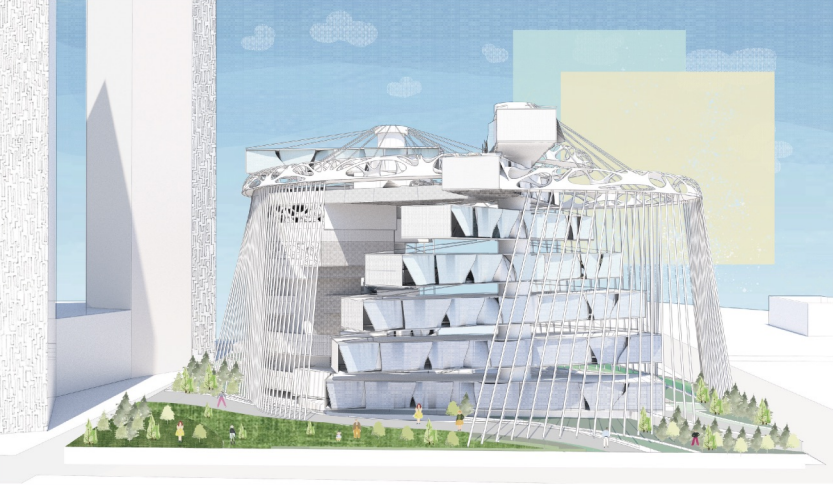
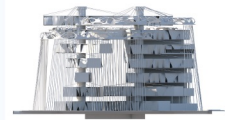
We have designed three different aerial trails in the air to meet different functions such as reading/leisure/sports.



front view



right view



UNI Competition Certificatem And Team Position



TEAM POSITION

As the team leader, responsible for small group work, concept proposal, system analysis, model construction, etc.

LINK

<https://uni.xyz/projects/nomadhouse-rotating-building-desc-the-b/>